



LEOKING

"Baby We a 2"



FOR A BETTER LIFE

"Every child is a different kind of flower, and all together, make this world a beautiful garden."



STORIES FROM OUR CUSTOMERS

Once upon a time, there was a little girl named Lily who loved to play dress-up. She would spend hours in her room, trying on different outfits and imagining herself as a princess, a superhero, or a fairy.

One day, Lily's mother took her to a local children's clothing store called LEOKING. As soon as Lily saw the colorful dresses, sparkling tiaras, and fluffy tutus, she knew she had found her paradise.

As Lily tried on various outfits, she couldn't help but twirl and dance around in front of the mirror. Her mother smiled as she watched her daughter's eyes light up with joy and excitement.

Finally, Lily chose a beautiful pink dress with a matching tiara and wand. As she skipped out of the store, Lily felt like a true princess, and she couldn't wait to show off her new outfit to her friends.

From that day on, Lily became a loyal customer of LEOKING, and she would often persuade her mother to revisit the store to try on new outfits. But no matter how many dresses she tried on, Lily always felt like a special and unique princess, thanks to the enchantment of LEOKING's clothing.



Just the beginning

THREE PIECE SET LEOKING KNITWEAR



04

From playdates to family gatherings, LEOKING's"
".knitwear for kids has got them covered

COTTON AND TEXTILE CLOTHING



07

"Your child deserves the best, and that's exactly what
LEOKING delivers with its clothing."

COLORING JEANS



11

"Experience the fun and uniqueness of LEOKING's coloring
jeans - clothing that encourages self-expression."

TIMELINE



15

Overall, LEOKING's baby clothing line has been steadily growing and evolving since its inception, with a continued focus on sustainability and ethical manufacturing practices. As the brand continues to expand, it remains dedicated to creating clothing that is not only fashionable and functional but also environmentally responsible.

ABOUT

Company

Just imagine: in spacious workshops equipped with state-of-the-art machines, children's clothing is created at a new level of quality and style. Each design is unique not only in its aesthetic, but also in the use of natural materials such as organic cotton, soft wool, and fine silk. Our team of skilled experts meticulously selects the raw materials, ensuring their quality and sustainability.

In 2004, our factory, equipped with the latest and most advanced technology, opened its doors in Gaziantep, the largest manufacturing city in Turkey. Since then, we have continuously grown, developed, and gained valuable experience. Currently, our factory spans an area of 3000 square meters and employs 240 dedicated individuals who work tirelessly to create products of the utmost quality.

To better serve our partners, in 2020 we opened a wholesale store in the heart of the textile trade, Istanbul. Our store offers a comprehensive range of products at factory prices, ensuring convenience and affordability for our customers.

In 2021, we expanded into the international market. Now, if you need to acquire our goods within the territory of the Customs Union, you can purchase them from our representative in Moscow at manufacturer's prices. Our products come with all the necessary documentation for their official sale within the Customs Union, including GTE, DS, and certificates.





Threads are thin strands of material that are twisted or woven together to create textiles. While threads might seem like a small and insignificant part of our lives, they have played a major role in human history. From the clothes we wear to the tools we use, threads have been essential in shaping our world.

One of the earliest uses of threads was in the creation of textiles. The ancient Egyptians were skilled in the art of spinning thread and weaving it into cloth. Their clothing was made from linen, which was woven from flax fibers. The use of textiles and threads allowed people to create warm and durable clothing, and it helped to protect them from the elements.

CERTIFICATE





THE NEW SEASON BEGINS WITH CREATIVITY



MODEL NUMBER : PUE-9562



Five piece set



OUR LOVE GROWS
MEANING



48% MERINO WOOL
40% PAN
12% ELASTIN
INSIDE 100% COTTON
M: 12 - 18 - 24 - 36



MODEL NUMBER : 9557



LOVE AND
CREATIVITY

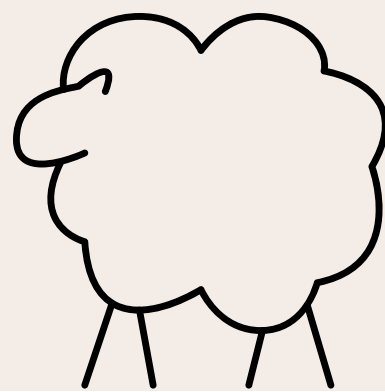


48% MERINO WOOL
40% PAN
12% ELASTIN
INSIDE 100% COTTON
M: 6 - 9 - 12 - 18

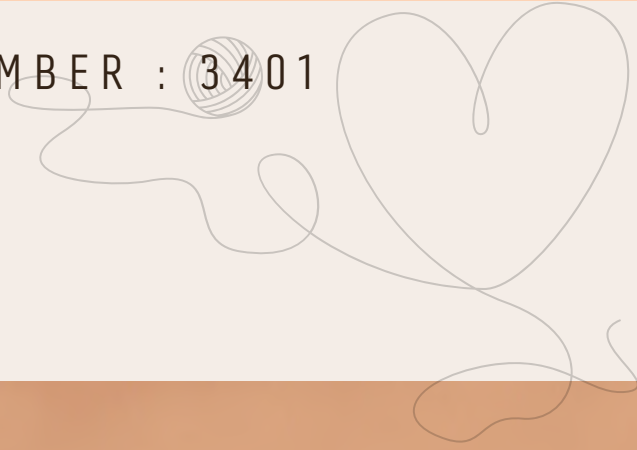




NEW BOX



MODEL NUMBER : 3401



SET OF SIX

48% MERINO WOOL
40% PAN
12% ELASTIN
INSIDE 100% COTTON
M: 0 - 3




Wool

MODEL NUMBER : 3402





INTERNAL 



48% MERINO WOOL
40% PAN
12% ELASTIN
INSIDE 100% COTTON
M: 0 - 3



"THE SOUL IS HEALED
BY BEING WITH
CHILDREN."





LEOKING

NO : 9558





LOVE



48% MERINO WOOL
40% PAN
12% ELASTIN
INSIDE 100% COTTON
M: 6 - 9 - 12 - 18





MODEL NUMBER : PUE-9552

Children are the anchors that hold a
mother to life.



WITH US WE CREATE
THE FUTURE



48% MERINO WOOL
40% PAN
12% ELASTIN
INSIDE 100% COTTON
M: 6 - 9 - 12 - 18





NO : PUE 9553



48% MERINO WOOL

40% PAN

12% ELASTIN

INSIDE 100% COTTON

M: 9- 12 -18- 24





NO : PUE 9551





48% MERINO WOOL
40% PAN
12% ELASTIN
INSIDE 100% COTTON
M: 6 - 9 - 12 - 18



LEOKING



NO : 9570

LEOKING



48% MERINO WOOL

40% PAN

12% ELASTIN

INSIDE 100% COTTON

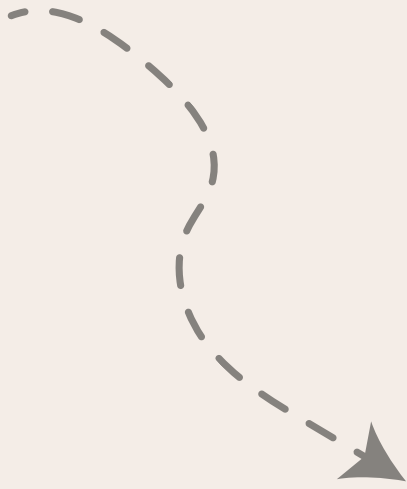
M: 6 - 9 - 12 - 18



LEOKING



NO : 9569

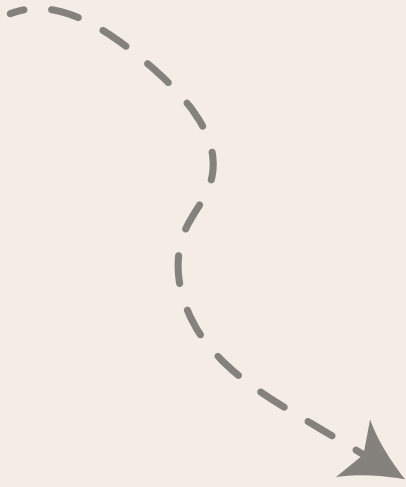


48% MERINO WOOL
40% PAN
12% ELASTIN
INSIDE 100% COTTON
M: 6 - 9 - 12 - 18

LEOKING



NO : 9556



48% MERINO WOOL
40% PAN
12% ELASTIN
INSIDE 100% COTTON
M: 6 - 9 - 12 - 18



LEOKING



NO : 9555



INTERNAL 



48% MERINO WOOL
40% PAN
12% ELASTIN
INSIDE 100% COTTON
M: 3 - 6 - 9 - 12

LEOKING



NO : 95444

LOVE



48% MERINO WOOL

40% PAN

12% ELASTIN

INSIDE 100% COTTON

M: 6 - 9 - 12 - 18

“WHEN CHILDREN DRAW,
THEY CREATE BRIDGES OF
DREAMS BETWEEN
HEARTS.”

❖ *Lovely* ❖





INTERNATIONAL

NO : 9540



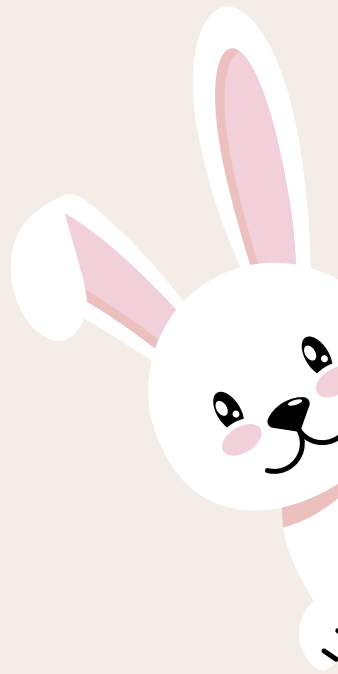
LEOKING





48% MERINO WOOL
40% PAN
12% ELASTIN
INSIDE 100% COTTON
M: 6 - 9 - 12 - 18





NO : 9565





INTERNAL 



48% MERINO WOOL
40% PAN
12% ELASTIN
INSIDE 100% COTTON
M: 6 - 9 - 12 - 18

THE WORLD OF EMBROIDERY





NO : 9546



LEOKING





48% MERINO WOOL

40% PAN

12% ELASTIN

M: 6 - 9 - 12 - 18

NO : 9563



LEOKING



YES NOW
YES NOW
YES NOW
YES NOW



48% MERINO WOOL
40% PAN
12% ELASTIN
M: 6 - 9 - 12 - 18



NO : 9568



LEOKING





48% MERINO WOOL

40% PAN

12% ELASTIN

M: 6 - 9 - 12 - 18



NO : 9567



LEOKING



48% MERINO WOOL

40% PAN

12% ELASTIN

M: 6 - 9 - 12 - 18



48% MERINO WOOL

40% PAN

12% ELASTIN

M: 6 - 9 - 12 - 18



NO : 9564



LEOKING





48% MERINO WOOL

40% PAN

12% ELASTIN

M: 6 - 9 - 12 - 18



travel itinerary

LEOKING



NO : PUE 9559





48% MERINO WOOL

40% PAN

12% ELASTIN

M: 6 - 9 - 12 - 18





NO : PUE 9560





48% MERINO WOOL

40% PAN

12% ELASTIN

M: 6 - 9 - 12 - 18

MODEL NUMBER : PUE-9566





48% MERINO WOOL

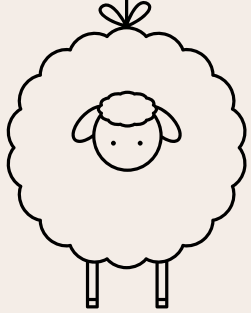
40% PAN

12% ELASTIN

M: 6 - 9 - 12 - 18



MODEL NUMBER : PUE-9548



LOVE

THE HAT IS COTTON
WHY ?
FOR THE BABY'S HEAD
WE CARE ABOUT YOU



48% MERINO WOOL
40% PAN
12% ELASTIN
INSIDE 100% COTTON
M: 6 - 9 - 12 - 18

LEOKING



NO : 9415



48% MERINO WOOL

40% PAN

12% ELASTIN

INSIDE 100% COTTON

M: 6 - 9 - 12 - 18





LEOKING



NO : 9414



48% MERINO WOOL

40% PAN

12% ELASTIN

INSIDE 100% COTTON

M: 6- 9 -12 - 18





NO : 9416



48% MERINO WOOL

40% PAN

12% ELASTIN

INSIDE 100% COTTON

M: 6- 9 -12- 18





NO : 9413



48% MERINO WOOL

40% PAN

12% ELASTIN

INSIDE 100% COTTON

M: 6 - 9 - 12 - 18



LEOKING



NO : C- 8906





48% MERINO WOOL
40% PAN
12% ELASTIN
INSIDE 100% COTTON
M: 9 - 12 - 18 - 24



LEOKING



NO : C- 8908





48% MERINO WOOL
40% PAN
12% ELASTIN
INSIDE 100% COTTON
M: 6 - 9- 12 - 18



LEOKING



NO : C- 8907





48% MERINO WOOL
40% PAN
12% ELASTIN
INSIDE 100% COTTON
M: 9 - 12 - 18 - 24





NO : C- 8909





48% MERINO WOOL
40% PAN
12% ELASTIN
INSIDE 100% COTTON
M: 9 - 12 - 18 - 24





LEOKING
NEW EXPERIENCE



NO : 9323



LEOKING





48% MERINO WOOL

40% PAN

12% ELASTIN

M: 3 - 6 - 9 - 12



NO : 9322



LEOKING





48% MERINO WOOL
40% PAN
12% ELASTIN
INSIDE 100% COTTON
M: 1 -3 3-6X2 6-9



NO : 9713



LEOKING

48% MERINO WOOL

40% PAN

12% ELASTIN

M: 90 X 100



Lily : Hello, leo
CAN I SEE THE HATS ?

leo :

Hi Lily! Yes, of course, the hats are made with a blend of natural wool and cotton, along with genuine fur. They are free from any harmful substances. I wish you a great time .



NO : 2004



LEOKING



48% MERINO WOOL
40% PAN
12% ELASTIN
INSIDE 100% COTTON
M: 6 - 9 - 12 - 36



NO : 2005



LEOKING



48% MERINO WOOL
40% PAN
12% ELASTIN
INSIDE 100% COTTON
M: 1 - 6 - 6 - 9





NO : 2006





48% MERINO WOOL
40% PAN
12% ELASTIN
INSIDE 100% COTTON
M: 1 - 6 - 6 - 9









48% MERINO WOOL
40% PAN
12% ELASTIN
INSIDE 100% COTTON
M: 1 - 6 - 6 - 9

NO : 2011





WELCOME TO THE WORLD OF COTTON



**NEW
HIGHLIGHT**



NO : PUE 8440





100% COTTON

M: 6 - 9 - 12 - 18



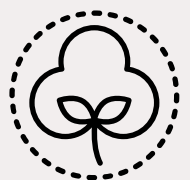


NO : PUE -8443





100% COTTON
M: 6 - 9 - 12 - 18





NO : PUE -8447





100% COTTON
M: 6 - 9 - 12 - 18



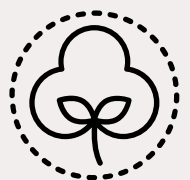


NO : PUE - 8451





100% COTTON
M: 6 - 9 - 12 - 18





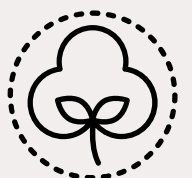
NO : PUE - 8356/5





100% COTTON

M: 9 - 12 - 18 - 24



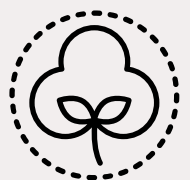


NO : PUE - 8430





100% COTTON
M: 6 - 9 - 12 - 18



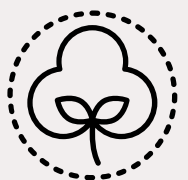


NO : PUE 8425





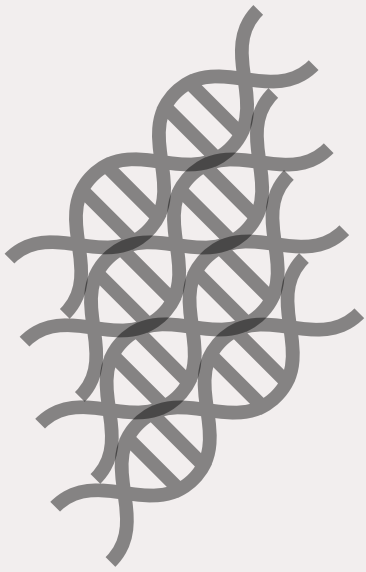
100% COTTON
M: 6 - 9 - 12 - 18





NO : PUE 8452





100% COTTON

M: 6 - 9 - 12 - 18





NO : PUE 8442





100% COTTON

M: 6 - 9 - 12 - 18



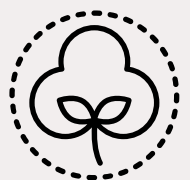


NO : PUE 8441





100% COTTON
M: 6 - 9 - 12 - 18





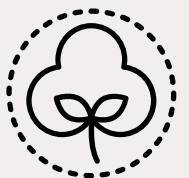
NO : PUE 8434





100% COTTON

M: 6 - 9 - 12 - 18





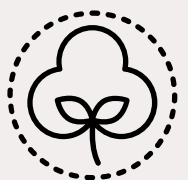
NO : PUE 8439



LEOKING



100% COTTON
M: 6 - 9 - 12 - 18



leoking

LEOKING



NO : PUE 8437





100% COTTON

M: 6 - 9 - 12 - 18



LEOKING



NO : PUE 8435





100% COTTON
M: 3 - 6 - 9 - 12





NO : PUE 8448





100% COTTON
M: 6 - 9 - 12 - 18





NO: 8398

100% COTTON

M: 3 - 6 - 9 - 12





NO : 8426

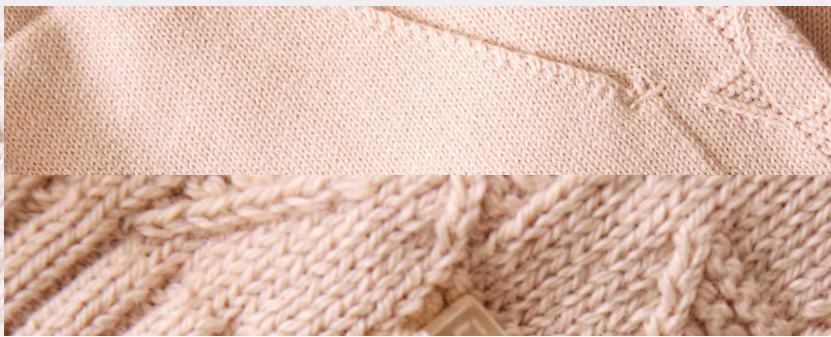
100% COTTON

M: 3 - 6 - 9 - 12

LEOKING



NO : 8431





LEOKING



NO : 8431

100% COTTON

M: 6 - 9 - 12 - 18



NO : 8427

100% COTTON

M: 3 - 6 - 9 - 12



NO : 8401

100% COTTON

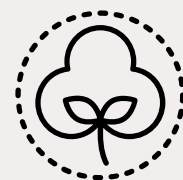
M: 3 - 6 - 9 - 12



NO : 7372

100% COTTON

M: 0-1 / 1-3X2 / 3-6





NO : 7376



LEOKING



100% COTTON

M: 0-1 / 1-3X2 / 3-6





NO : - 7377



LEOKING



100% COTTON

M: 0-1 / 1-3X2 / 3-6





NO : PUE - 12509





100% COTTON

M: 9 - 12 - 18 - 24



NO : PUE - 12508





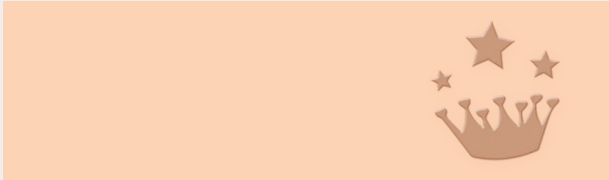
100% COTTON

M: 9 - 12 - 18 - 24



100% COTTON

M: 9 - 12 - 18 - 24



NO 12507



100% COTTON

M: 9 - 12 - 18 - 24

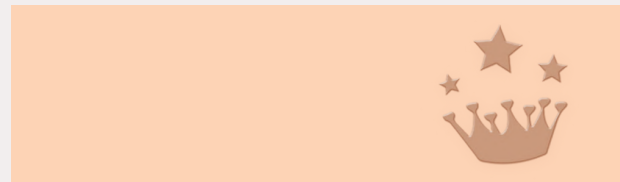


NO : 12511



100% COTTON

M: 9 - 12 - 18 - 24



NO : 12506



100% COTTON

M: 9 - 12 - 18 - 24



Baseball



NO : 12505 



NO : 12503 





100% COTTON

M: 9 - 12 - 18 - 24



LEOKING



NO : 12504





100% COTTON

M: 9 - 12 - 18 - 24





LEOKING



NO : 10815



100% COTTON

M: 0-1 / 1-3 / 3-6 / 6-9





NO : 10816



100% COTTON

M: 0-1 / 1-3 / 3-6 / 6-9



LEOKING



NO : 10817





100% COTTON

M: 0-1 / 1-3 / 3-6 / 6-9





LEOKING

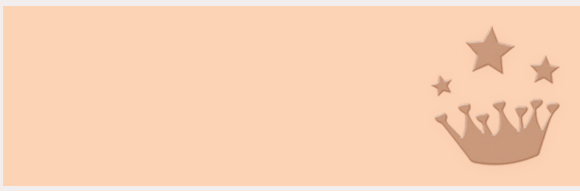


NO : 10818



100% COTTON

M: 0-1 / 1-3 / 3-6 / 6-9





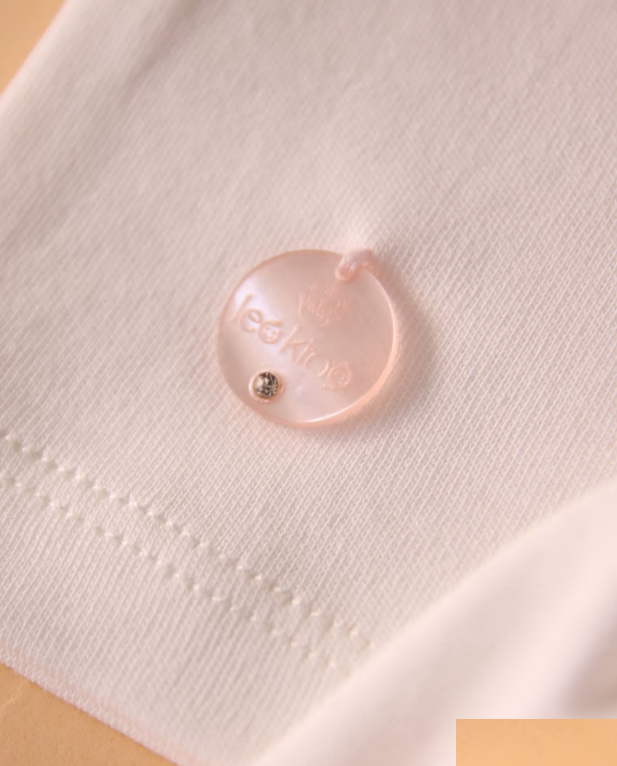
NO: 10801-2

100% COTTON

M: 0-1 / 1-3 / 3-6 / 6-9



LEOKING



NO : 12404



100% COTTON

M: 3 - 6 - 9 - 12



100% COTTON

M: 3 - 6 - 9 - 12



NO : 12403





LEOKING

100% COTTON

M: 3 - 6 - 9 - 12



NO : 12402





NO : - 10716

100% COTTON

M: 0-1 / 1-3X2 / 3-6

LEOKING



NO : 7370

100% COTTON

M: 0-1 / 1-3X2 / 3-6



NO : 10724



NO : 10724

100% COTTON

M: 0-1 / 1-3X2 / 3-6



NO : 10725

100% COTTON

M: 0-1 / 1-3X2 / 3-6



NO : 10726



100% COTTON

M: 0-1 / 1-3X2 / 3-6



NO : 10727



100% COTTON

M: 0-1 / 1-3X2 / 3-6



LEOKING



NO : EL - 5353

100% COTTON

M: 9 - 12 - 18 - 24



NO : EL- 5345



100% COTTON

M: 9 - 12 - 18 - 24



NO : EL- 5350

LEOKING
LEOKING



100% COTTON

M: 9 - 12 - 18 - 24

LEOKING



NO : 5344



NO : EL- 5343



100% COTTON

M: 9 - 12 - 18 - 24



NO : EL- 5349



100% COTTON

M: 9 - 12 - 18 - 24



NO : EL- 5352



100% COTTON

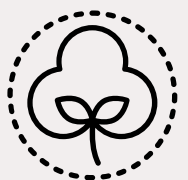
M: 9 - 12 - 18 - 24





100% COTTON

M: 0 - 3



leoking

LEOKING



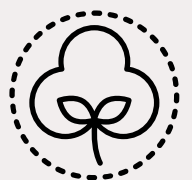
NO : 3062





100% COTTON

M: 0 - 3





100% COTTON

M: 0 - 3



100% COTTON

M: 0 - 3



100% COTTON

M: 0 - 3







100% COTTON

M: 0 - 3



NO: 3047

100% COTTON

M: 0 - 3

